

Profile system

- All-glass horizontal sliding wall
- Top hung construction consisting of individually sliding panels
- Panels open to the inside, outside or to the centre
- Opening of panels by sliding to one side or to both sides
- Optionally with revolving blind frame
- Height adjustment after installation possible

Fittings

- All fittings are concealed within the profiles
- Low-maintenance, non-corroding and failsafe hardware components
- Elements are locked via a floor bolt
- An integrated pass through panel with a lever-operated multiple locking system, lock and profile cylinder can be provided

Running assembly

- Each element is guided by two running assemblies sliding in a ceiling mounted aluminium track
- Low-noise, low-wear, heat- and cold-resistant rollers
- Running assemblies pivot at any angle between 90° and 180°

Sealing and ventilation

- Vertical gap of approximately 3 mm between the panels
- Gap may be closed by fitting gap gaskets
- Brush gaskets are fitted horizontally at the top and bottom on the inside and outside
- Lower and upper brush gaskets are attached to the panel frames and not to the guide tracks

Glazing

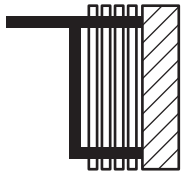
- 8, 10 and 12 mm tempered safety glass panes (ESG-H)
- Panes secured via concealed screw-fixing system in top and bottom panel profiles
- Subsequent replacement of panes without difficulty
- Subsequent replacement of panels without difficulty



tested SUNFLEX Quality

NewGlassTechnology

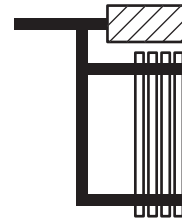
Basic parking bay designs



Design 1



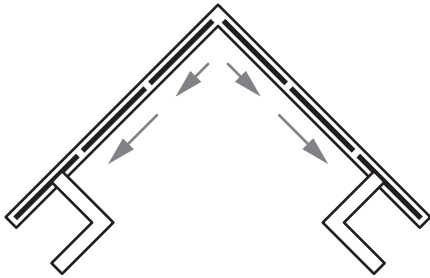
Design 2



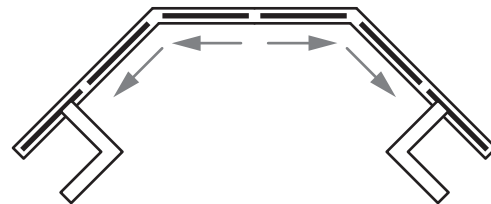
Design 3

Other parking bay designs on request

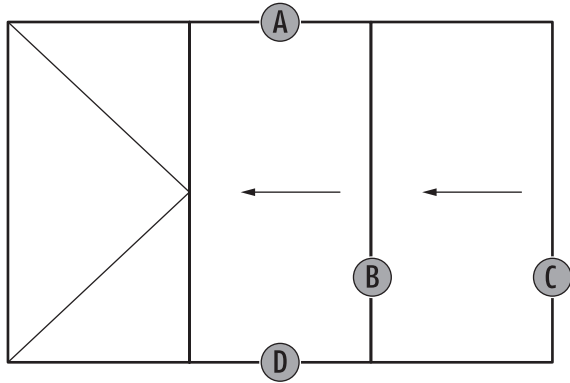
Corner angles 90°



Corner angles 90°-180°

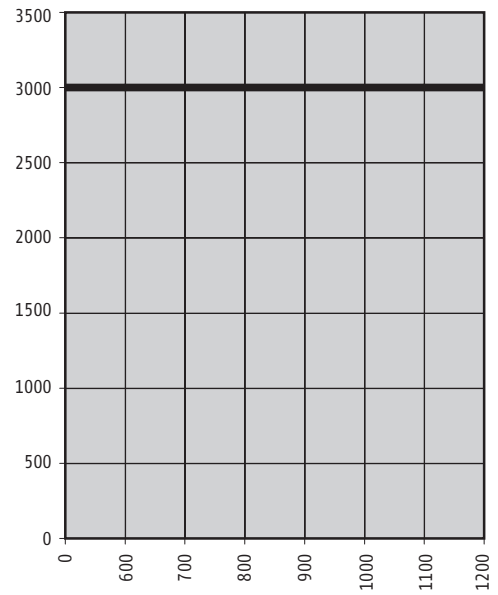


Other floor plan geometries upon request

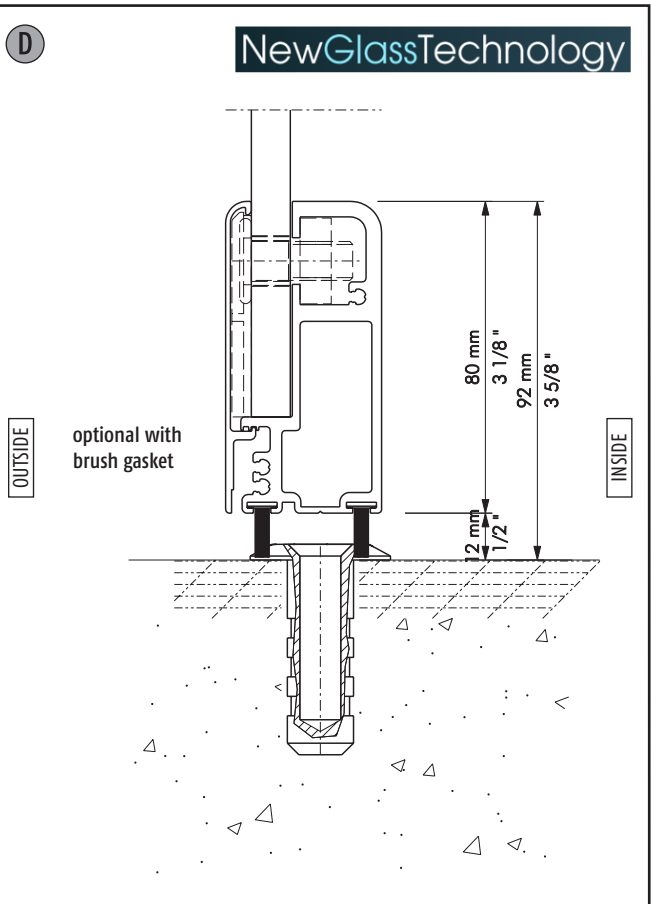
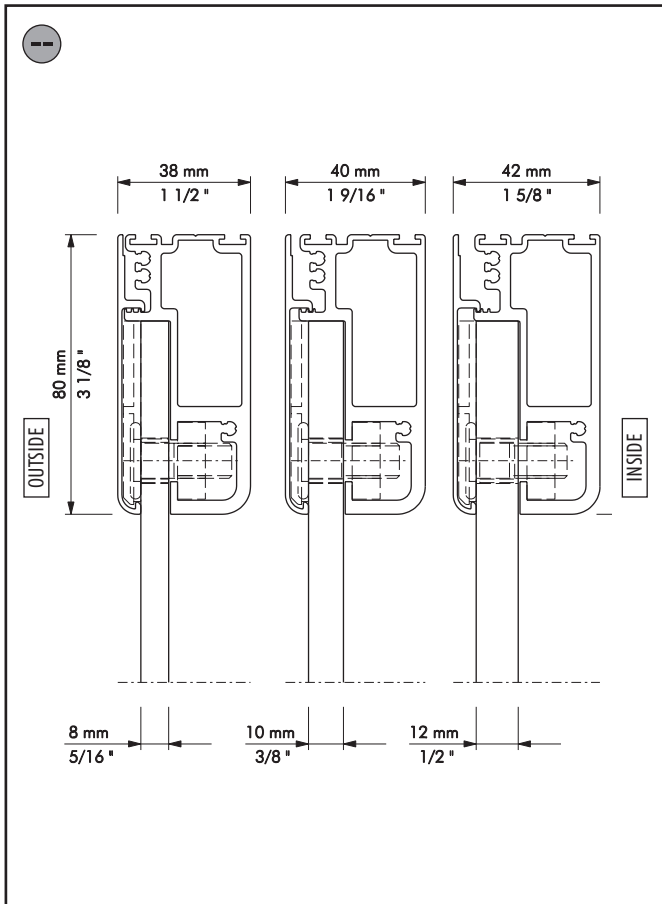


Details at uneven panel partition in one direction

Panel size diagram

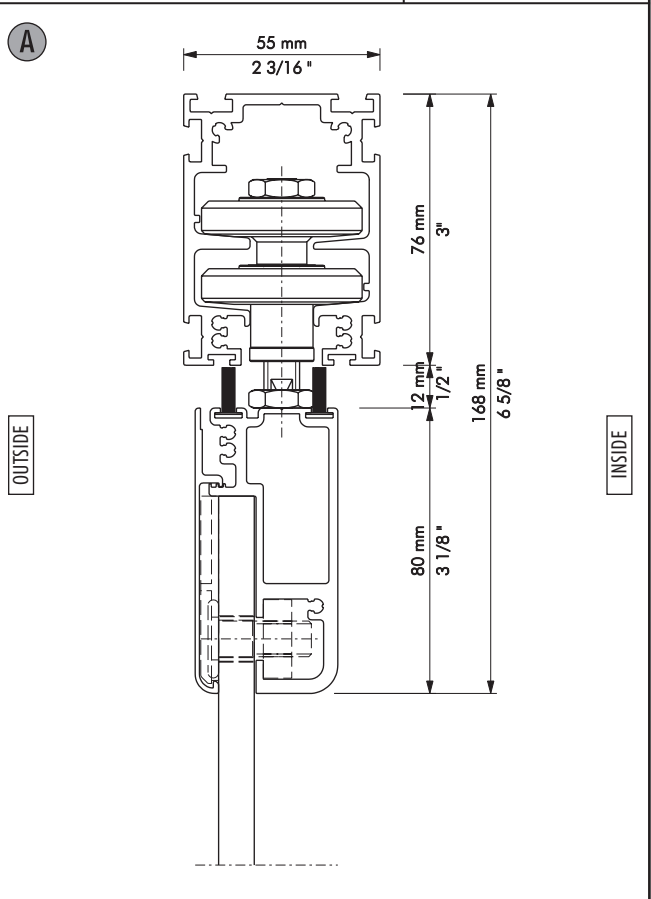
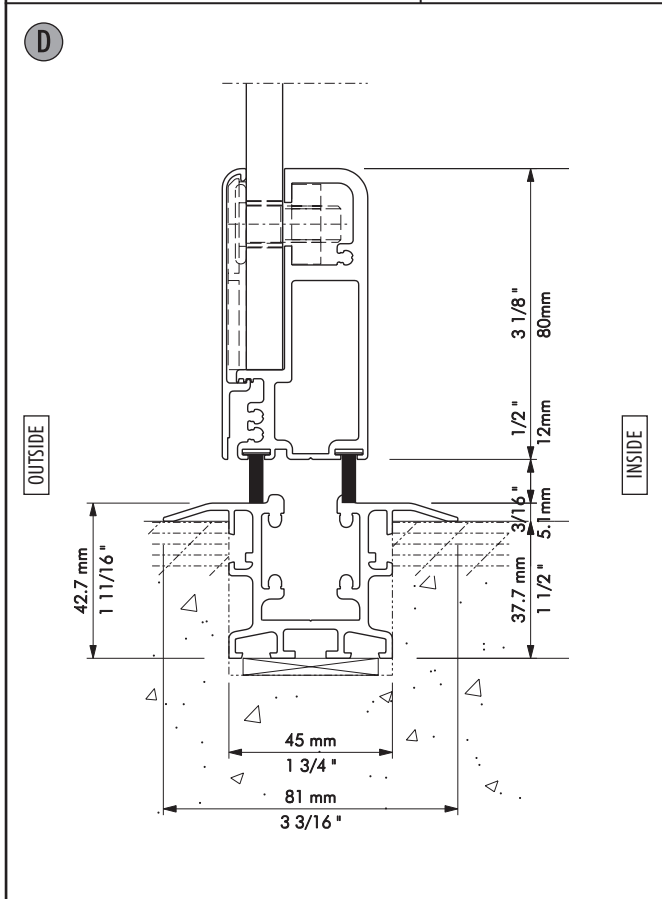


| Ref. | Section | Description | Page |
|------|-------------|--|------|
| -- | SF40HSW-001 | Vertical-Section, panel profile + glazing variants | 4 |
| D | SF40HSW-004 | Vertical-Section, locking socket | 4 |
| D | SF40HSW-005 | Vertical-Section, flush bottom track | 4 |
| A | SF40HSW-002 | Vertical-Section, top track standard | 4 |
| A | SF40HSW-003 | Vertical-Section, top track + overlay profile inside + outside | 5 |
| B | SF40HSW-101 | Horizontal-Section, panel - panel | 5 |
| C | SF40HSW-102 | Horizontal-Section, panel - blind frame | 5 |
| B | SF40HSW-103 | Horizontal-Section, panel - panel inside bending 162° - 180° | 5 |
| B | SF40HSW-104 | Horizontal-Section, panel - panel inside bending 90° - 162° | 6 |
| B | SF40HSW-105 | Horizontal-Section, panel - panel outside bending 120° - 180° | 6 |
| B | SF40HSW-106 | Horizontal-Section, panel - panel outside bending 90° - 120° | 6 |



Description: Vertical-Section, panel profile + glazing variants
 System: SF40 H-S-W
 Detail-No.: SF40HSW-001

Description: Vertical-Section, locking socket
 System: SF40 H-S-W
 Detail-No.: SF40HSW-004



Description: Vertical-Section, flush bottom track
 System: SF40 H-S-W
 Detail-No.: SF40HSW-005

Description: Vertical-Section, top track standard
 System: SF40 H-S-W
 Detail-No.: SF40HSW-002

| | | | |
|--|---|--|---|
| <p>A</p> <p>109 mm 4 5/16"</p> <p>27 mm 55 mm 27 mm 1 1/16" 2 3/16" 1 1/16"</p> <p>76 mm 3"</p> <p>12 mm 1/2"</p> <p>168 mm 6 5/8"</p> <p>80 mm 3 1/8"</p> <p>OUTSIDE</p> <p>INSIDE</p> | <p>B</p> <p>OUTSIDE</p> <p>11</p> <p>3</p> <p>1</p> <p>INSIDE</p> | | |
| <p>Description: Vertical-Section, top track + overlay profile inside + outside</p> | <p>System: SF40 H-S-W Detail-No.: SF40HSW-003</p> | <p>Description: Horizontal-Section, panel - panel</p> | <p>System: SF40 H-S-W Detail-No.: SF40HSW-101</p> |
| <p>C</p> <p>OUTSIDE</p> <p>45 mm 1 3/4"</p> <p>4 mm 3/16"</p> <p>45 mm 1 3/4"</p> <p>INSIDE</p> | <p>B</p> <p>OUTSIDE</p> <p>3 1/8"</p> <p>162° - 180°</p> <p>INSIDE</p> | | |
| <p>Description: Horizontal-Section, panel - blind frame</p> | <p>System: SF40 H-S-W Detail-No.: SF40HSW-102</p> | <p>Description: Horizontal-Section, panel - panel inside bending 162° - 180°</p> | <p>System: SF40 H-S-W Detail-No.: SF40HSW-103</p> |

| | | | |
|---|---|---|---|
| <p>B OUTSIDE</p> <p>INSIDE</p> | <p>B OUTSIDE</p> <p>INSIDE</p> | | |
| <p>Description: Horizontal-Section, panel - panel inside bending 90° - 162°</p> | <p>System: SF40 H-S-W Detail-No.: SF40HSW-104</p> | <p>Description: Horizontal-Section, panel - panel outside bending 120° - 180°</p> | <p>System: SF40 H-S-W Detail-No.: SF40HSW-105</p> |
| <p>B OUTSIDE</p> <p>INSIDE</p> | | | |
| <p>Description: Vertical-Section, panel - panel outside bending 90° - 120°</p> | <p>System: SF40 H-S-W Detail-No.: SF40HSW-106</p> | | |